

# CHILDREN'S MEDICAL SERVICES CARDIAC FACILITY APPROVAL

## New Facility

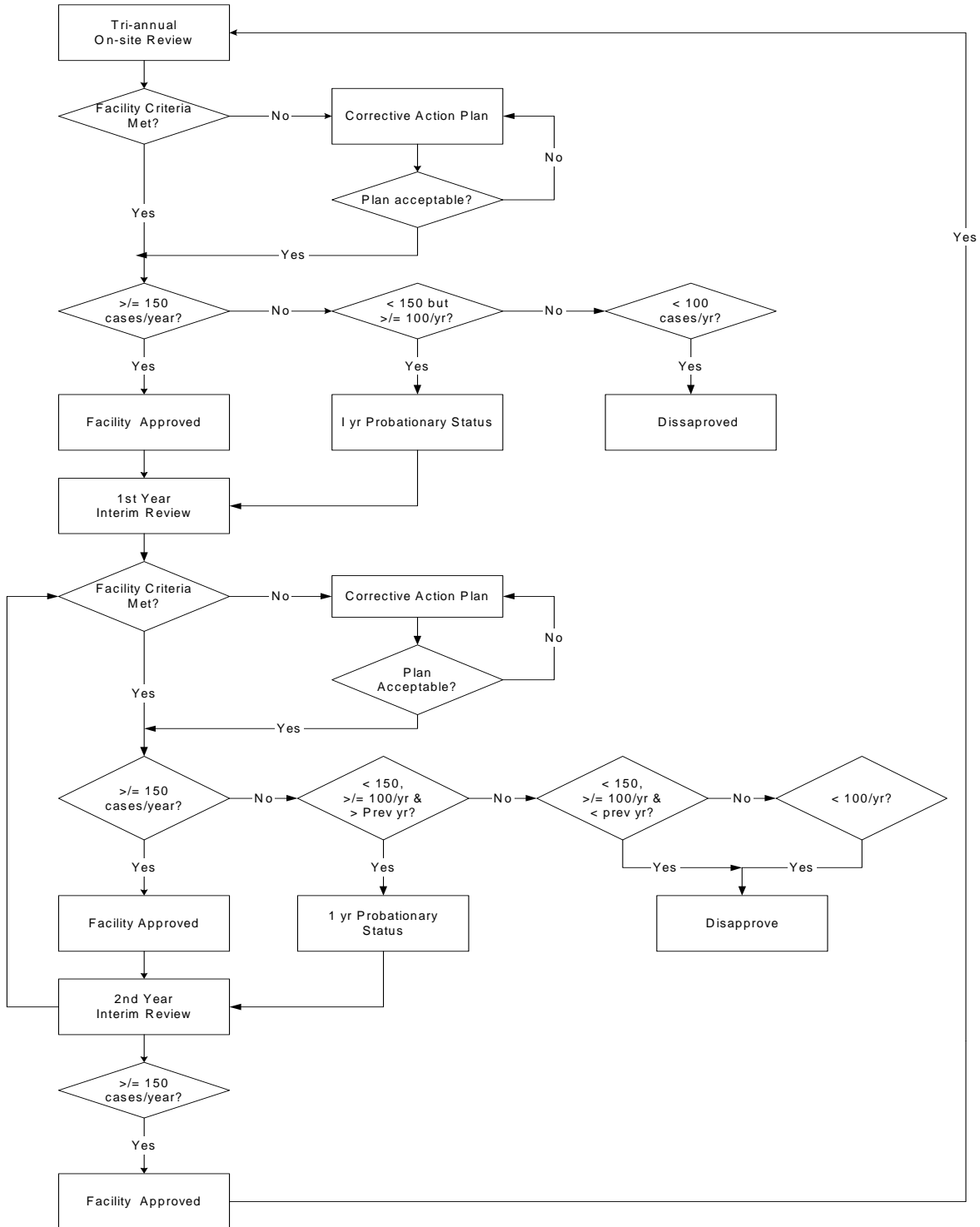


On-site reviews of new applications assumes that the current number of approved facilities does not exceed the per live birth ratio.

Facility Criteria includes but is not limited to the following: Practitioner volume standards; laboratory certification; adequate cardiac team composition, etc.

# CHILDREN'S MEDICAL SERVICES CARDIAC FACILITY APPROVAL

## Existing Facility



Facility Criteria includes but is not limited to the following: Practitioner volume standards; laboratory certification; adequate cardiac team composition, etc.